

Conference Paper

Information System Analysis of Assistance Services for Persons with Social Welfare Problems Based on Android Towards Smart City

Arman¹, Alang², and Yusrianto Malago³¹Faculty of Social and Political Sciences, Ichsan University, Gorontalo, Indonesia²School of Information and Computer Management, Ichsan University, Gorontalo, Indonesia³Faculty of Computer Sciences, Ichsan University, Gorontalo, Indonesia

Abstract

The purpose of this research is to find out and develop an analysis of information system assistance services for people with problems based on Android-based social welfare towards smart cities. The object of this study is the Procurement Information System and Distribution of Assistance to People with Social Welfare Problems (PMKS) in social offices and Android-based workforce in Gorontalo. Stage one involved data collection. The second stage, involved analysing the data and the problems. The third stage was to create a design model, output design, input design, database design and technology design.

Keywords: Information system analysis, social welfare, smart city.

Corresponding Author:
Arman
armansospol@gmail.com

Published: 11 November 2020

Publishing services provided by
Knowledge E

© Arman et al. This article is distributed under the terms of the [Creative Commons Attribution License](#), which permits unrestricted use and redistribution provided that the original author and source are credited.

Selection and Peer-review under the responsibility of the IC-HEDS 2019 Conference Committee.

1. Introduction

Gorontalo City's social and labor office is the local government agency that regulates Labor and Social Welfare. Based on the results of the formation of the Cabinet issued a Letter of the State Minister for Administrative Reform No. 56 / M / PAN / 2000 dated February 4, 2000 concerning the Establishment of the Panit Integration of Departmental Partial Institutions into Service. With reference to the Minister of PAN's Letter above, starting the social welfare tasks are handed over to the regional government based on Law No. 22 of 1999 concerning Regional Government. Furthermore, by the Regional leadership, a Regional Regulation is made that regulates the Regional Office, namely Regional Regulation No. 19 of 2000 concerning the Organization and Work Procedure of Gorontalo Regional Office.

In line with that, in the process of data collection and reports that are carried out at the Social Service and Gorontalo City workforce in the form of an information service

 OPEN ACCESS

system of assistance for people with social welfare problems, this must be done. The development of the Social Welfare field is carried out as a manifestation and mandate of the implementation of the 1945 Constitution carried out together in an integrated, gradual, sustainable manner so that the results can be felt by the community in accordance with Law No. 11/2009 concerning Social Welfare, particularly people with social welfare problems and the community in generally. The City of Gorontalo in carrying out social welfare development, focuses on PMKS fields such as poverty alleviation, neglect, disability, disability, alienation and disaster management. The factors causing poverty in Gorontalo City are largely due to the still low quality of human resources, physical inability / disability, social psychological, and geographical location so that disasters often occur. If this matter is not taken seriously it will cause wider social problems such as crime, trafficking of women and children, acts of violence and so on (Social service strategic plan 201 2). Based on the Republic of Indonesia Regulation No. 8/2012 concerning guidelines for data collection and data management with problems of social welfare and the potential and sources of social welfare, there are 26 types of PMKS. However, the types of PMKS in Gorontalo City are currently not that many. Social welfare problems that often occur in Gorontalo City in 2016 were as many as 5034 PMKS and in 2017 increased to 5494 with types of PMKS including: Neglected Children, the Elderly, People with Disabilities, Drugs, Inmates, Natural Disasters and Social Disasters (Social Disasters) Gorontalo City Social Affairs Office, 2017).

The development of this information system, carried out in several stages, namely collecting data, designing the system, making the system, alleviating the system and implementing the system. Based on the results of the method stages, it is expected to produce an information system that can handle the procurement of goods as well as channeling assistance to PMKS quickly, precisely and accurately and is useful for the Gorontalo City Social Service, for the benefit of the Government, the interests of other agencies, especially for the benefit of the community.

2. Methods and Equipment

2.1. Methods

With the first research method Data Collection Phase namely primary data and second stage analysis In the analysis of the system carried out the basic steps that must be carried out by the identification system analysis, namely the use of problems. Understanding, namely understanding the work of the existing system. Analyzing,

namely analyzing the system. And Reports, namely to make reports on the results of the analysis. The three stages of the design phase are Model Design, Output design, Database Design Input Design, Technology Design Phase The system testing phase and up to the implementation and output stages.

3. Results

Problem analysis is a process that sorts problems into smaller elements to study, with the aim of breaking down a problem from a system that is running now. The end result of this process is a solution in the form of a new system specification.

3.1. Proposed System Analysis

3.1.1. Current System

In the picture above is a system that can be used in the gorontalo social department, other than in the gorontalo region which is there in indonesia can use the same system, because the research system offers are ideal applied. we see various problems of problems that are facing the government of any problems, assistance services for persons social welfare issues.

3.2. Data Flow Diagram Level 0 Data Flow Chart

3.3. Diagram Arus Data Level 1 Proses 1

3.4. Level 1 Diagram Data Flow Process 2

3.5. Process Level 1 Data Flow Diagram 3

3.6. Design of Relationships Between Tables

In an interesting study, where the results of the study can be seen, the system was carried out by the government in Figura 1 and researchers created a new system for the government such as Fugra 2, only the kelurahan provided DPM (list of beneficiaries) data manually to the Gorontalo Provincial Social Service to be given before submitted to the Ministry of Social Affairs. The DPM, which is already at the Ministry of Social Affairs, then the SK right next to it is sent back to the Gorontalo Province Social Service and then

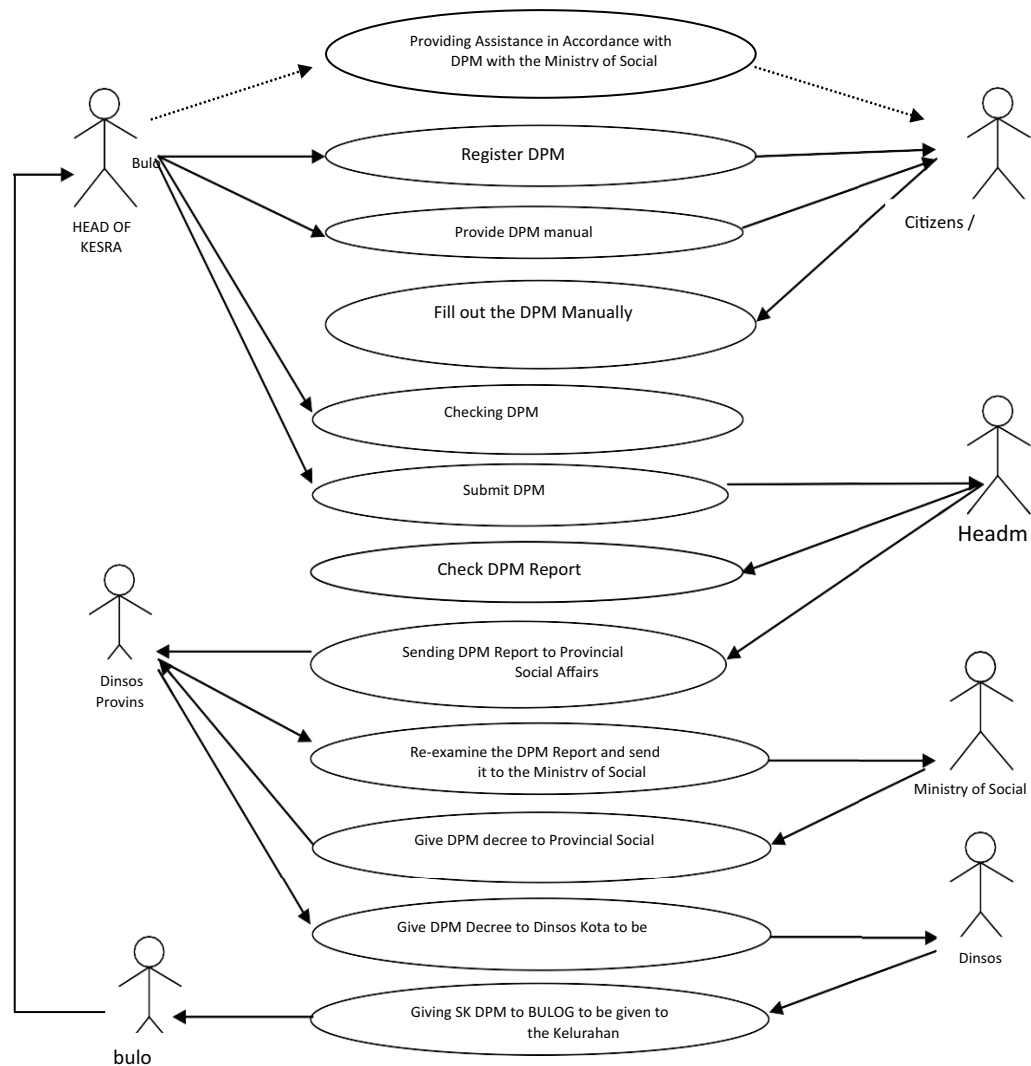


Figure 1: Proposed System Analys

forwarded to the Gorontalo City Social Service to be continued immediately and sent when representatives are linked to the PMKS to bring the relief items which are then handed over to the Kelurahan need community help. Finally, the kelurahan distributes assistance to the community in accordance with the DPM that is already in the Joint Decree by the Ministry of Social Affairs. This information system development, carried out in several ways, collected data, system design, system development, system testing and system implementation. on this basis, the existing system is too difficult and difficult for the community or beneficiary Information System that can help the procurement of relief goods for PMKS quickly, precisely and accurately as well as beneficial for the Gorontalo City Social Service, for the Government's interests, the government's interests, priority for the interests general.

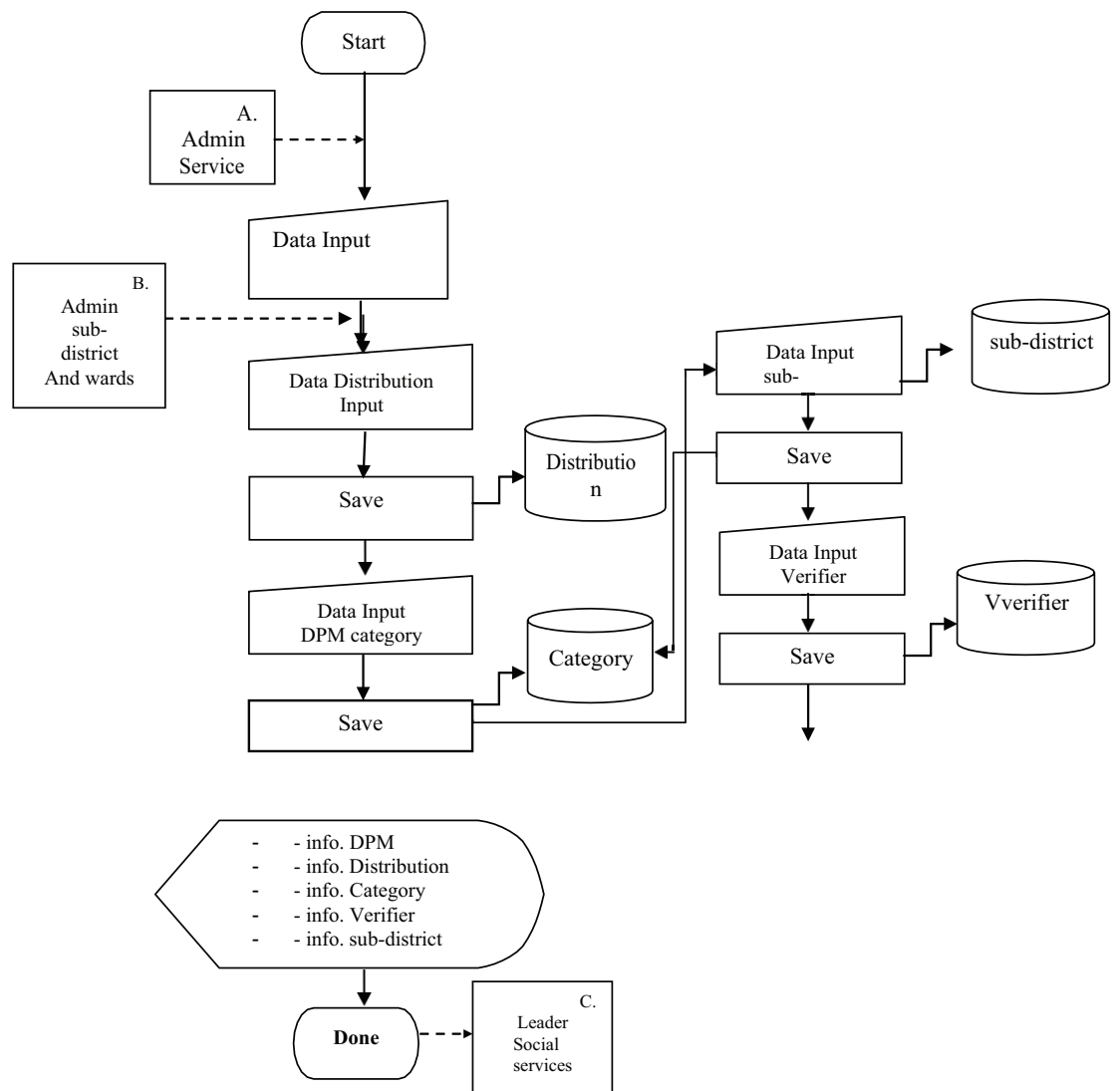


Figure 2: Proposed system

4. Conclusion

Conclusions in research Information Systems Analysis for Assistance Services for People with Social Problems Problems Based on Android Towards Smart City where system analysis can be seen in the second picture the researcher offers a system that can be used and applied to Figure 3 to the six android systems offered so that, the government can provide solutions to problems where the problem is the system that does not exist or the inaccurate data related to community welfare assistance in the city of Gorontalo.

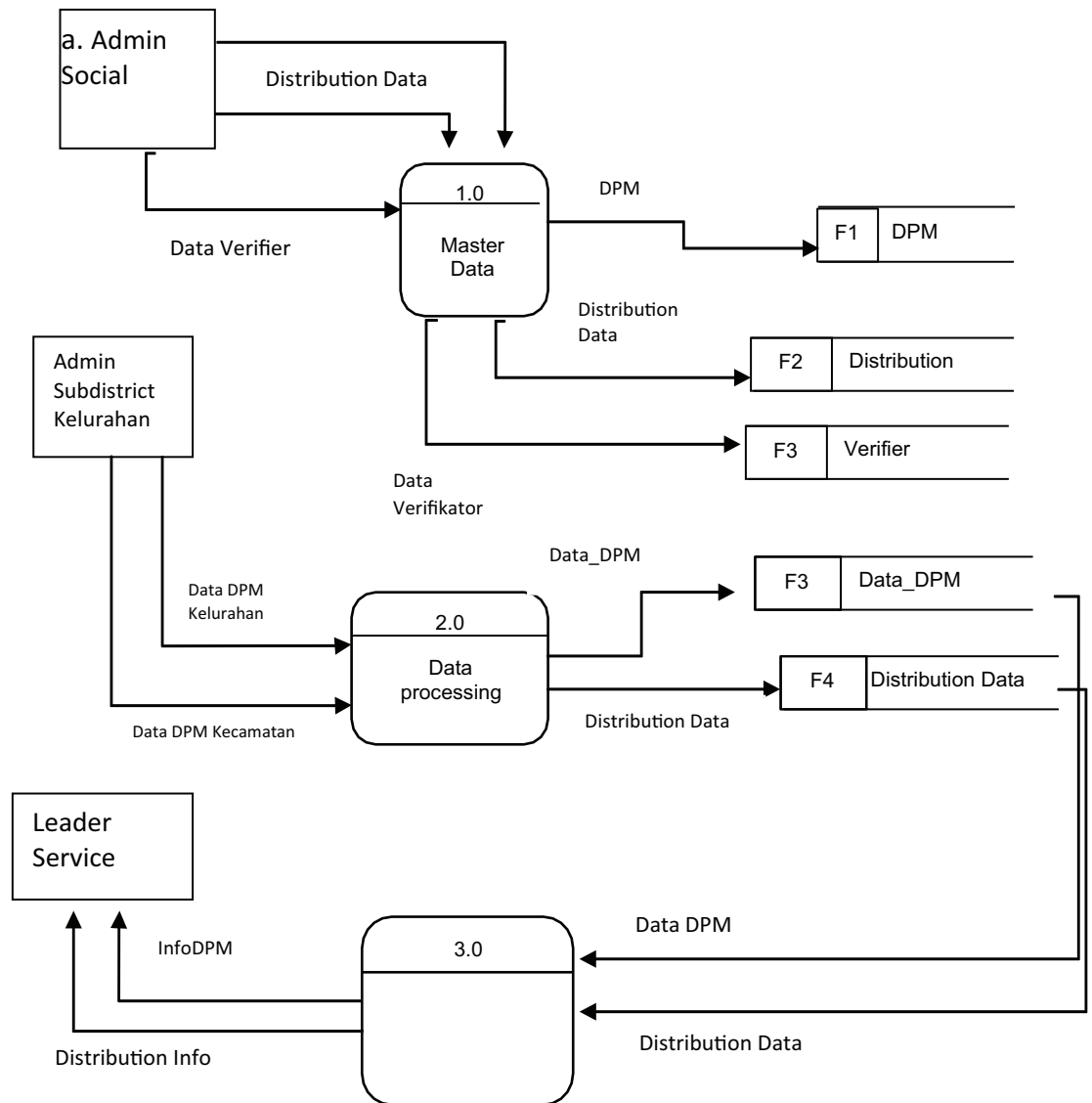


Figure 3: Level 0 Data Flow Chart

Funding

This research was supported by the Directorate of Research and Community Service, the Directorate General of Research and Development, Ministry of Research, Technology and Higher Education of the Republic of Indonesia

Acknowledgement

The researcher would like to thank my wife for giving a lot of encouragement, the lecturer team so that the completion of the system analysis phase, highest appreciation and countless gratitude, the researchers conveyed to the local government the social

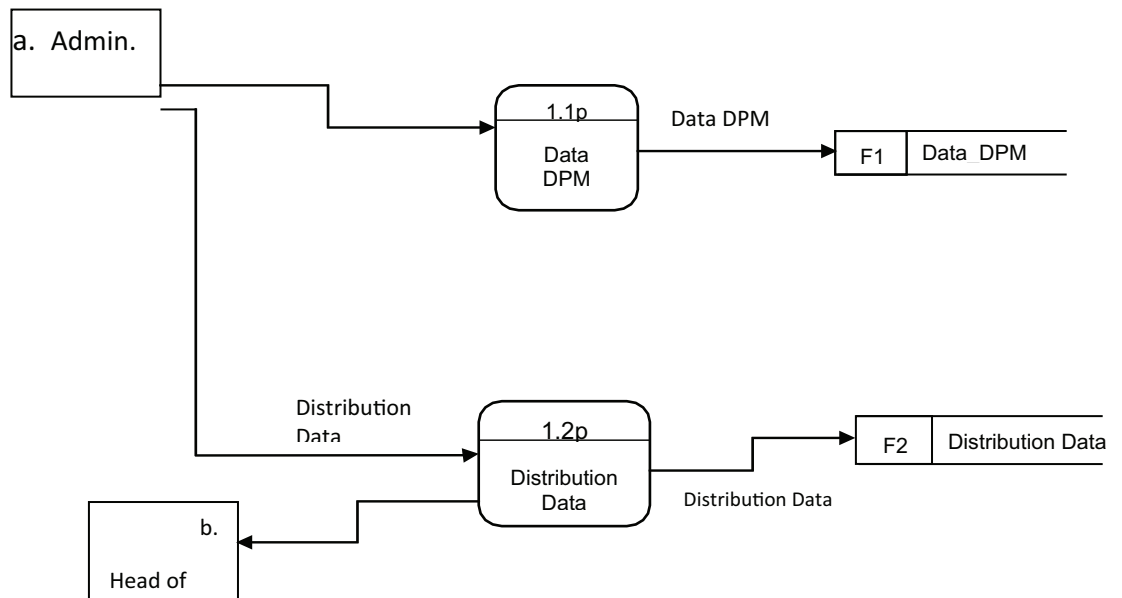


Figure 4: Process 1 Level 1 Data Flow Diagram

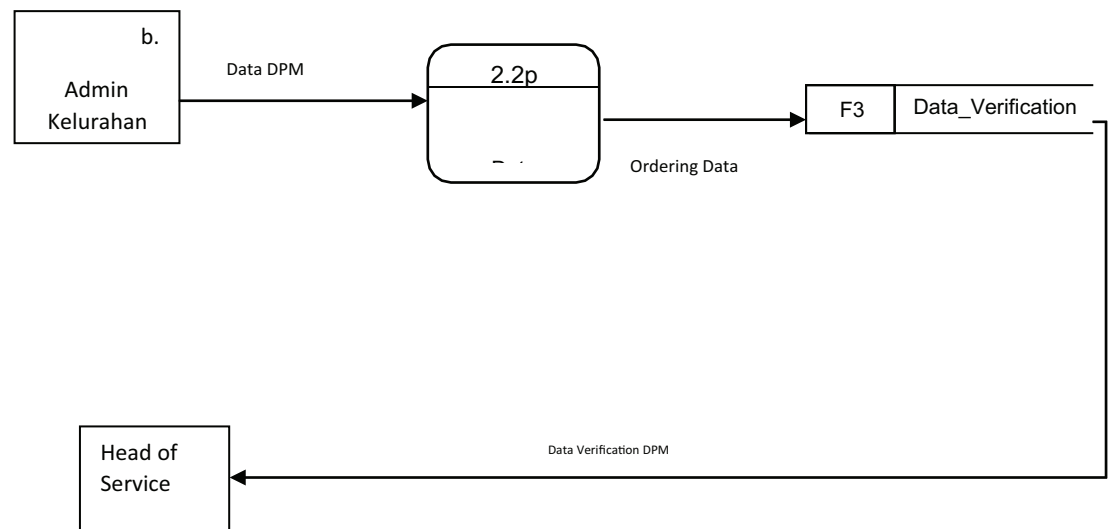


Figure 5: Process Level 1 Data Flow Diagram 2

service and labor of Gorontalo city The researcher is fully aware that this writing is far from perfect, therefore the researcher really hopes for corrections, suggestions and criticisms for the perfection of this paper. Finally, the authors hope that all assistance has been given get the best possible reply and that this paper is worth worship and useful for us all, especially in the development of science. Amen.

Conflict of Interest

This research can provide thoughtful and constructive contributions develop knowledge both related to computers specifically and other sciences relating to and related to this

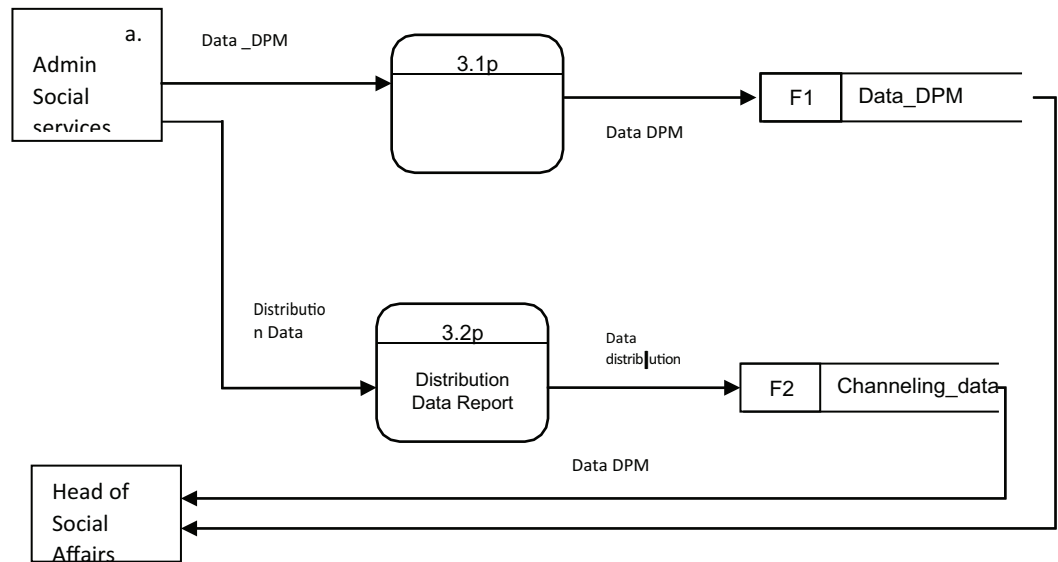


Figure 6: Level 1 data flow process diagram 3

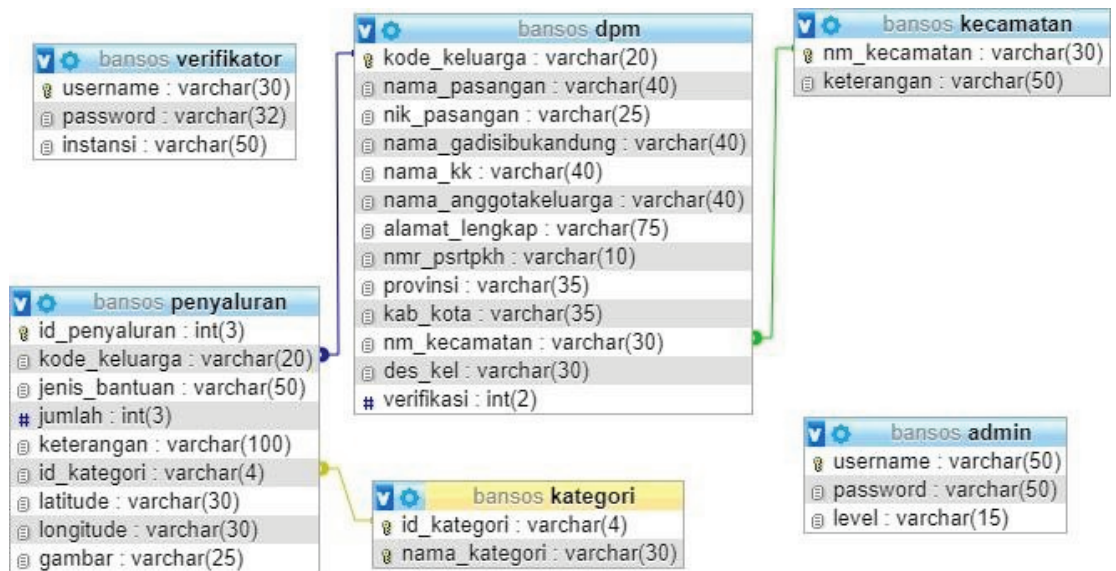


Figure 7: Design of Relationships Between Tables Discussion

research. input to all parties involved and those interested in the analysis of information systems for aid services for Android-based social welfare problems to smart city and make it easy for the public to find out all information related to PMKS assistance.

References

- [1] Dinas Sosial Kota Gorontalo. (2013). *Guide to Persons with Social Welfare Problems Gorontalo City Social Service*. Gorontalo Province.
- [2] Kasman, A. D. (2013). *Powerful Android Collaboration with PHP and MySQL*. Yogyakarta: Locomedia.

- [3] Ladjamuddin, *et al.* (2010). *Analysis and Design of Information Systems*. Yogyakarta: Andi Offset.
- [4] Nazir, M. (2009). *Research Methods*. Bogor: Ghalia Indonesia.
- [5] Permensos RI No. 8 of 2012.
- [6] Prahasta, E. (2006). *Information Systems: Tutorial Arcview*. Bandung: Informatics.
- [7] Rosa and Saladin. (2013). *Engineering Information of Structured and Object-Oriented*. Bandung: Housing.
- [8] Yakub. (2012). *Introduction to Information System*. Yogyakarta: Graha Science.