

## Conference Paper

# Investigating the Characteristics and Evolution of Apical Membrane Antigen 1 (AMA1) of *Plasmodium* sp. using Phylogenetic Approach in Searching for Drug Candidate

Rizky Nurdiansyah<sup>1</sup>, Kevin Nathanael Ramanto<sup>1</sup>, and Priscilla Jessica<sup>2</sup><sup>1</sup>Department of Bioinformatics, School of Life Sciences, Indonesia International Institute for Life Sciences, Jakarta, Indonesia<sup>2</sup>Department of Biotechnology, School of Life Sciences, Indonesia International Institute for Life Sciences, Jakarta, Indonesia

## Abstract

Malaria is an endemic disease caused by *Plasmodium* parasite with female Anopheles mosquitoes as a vector. With the increase of drug resistance *Plasmodium* emerging around the world, a new method should be devised against the spread of *Plasmodium* sp lineage. Protein evolution of *Plasmodium* sp. can be an invaluable aid as an input for rational drug design and immune-informatics methods based on the novel virulent gene that exists in these protozoa. Previously, we did data mining in the PlasmoDB database and found several proteins shared by *Plasmodium*, one of them was the Apical Membrane Antigen 1 (AMA1). This protein was further analyzed for its characteristics and evolutionary properties. AMA1 protein sequences from human-infecting *Plasmodium* (*P. falciparum*, *vivax*, *knowlesi*, *ovale*, and *malariae*) and non-infectious (*P. berghei*, *coatneyi*, and *cynomolgi*) were retrieved from PlasmoDB. Maximum likelihood phylogenetic tree with molecular clock analysis was reconstructed from AMA1 sequences using MEGAX. Protein domain analysis was done using the INTERPRO server. Several domains that can induce protective immunity and vaccine target were found in AMA1 of those *plasmodium*, such as coiled-coil, disordered region, and signal peptide domain. Furthermore, molecular clock analysis showed a similar evolutionary rate between AMA1 protein in human-infecting and non-infectious *Plasmodium*. Interestingly, the phylogenetic tree showed a mixed cluster of human-infecting with non-infectious, indicating a unique evolutionary relationship between *Plasmodium* lineage. Thus, this information could be beneficial in developing the drug and vaccine for *Plasmodium*-related infection.

**Keywords:** AMA1, drug target, protein domain, protein evolution, *Plasmodium*.

Corresponding Author:

Rizky Nurdiansyah

rizky.nurdiansyah@i3l.ac.id

Received: 1 February 2020

Accepted: 8 February 2020

Published: 16 February 2020

Publishing services provided by  
Knowledge E

© Rizky Nurdiansyah et al. This article is distributed under the terms of the [Creative Commons Attribution License](#), which permits unrestricted use and redistribution provided that the original author and source are credited.

Selection and Peer-review under the responsibility of the IC-BIOLIS Conference Committee.

 OPEN ACCESS

## 1. Introduction

Malaria is a vector-borne disease caused by *Plasmodium* parasites that are commonly found in developing countries [1]. Even though the efforts to eradicate malaria and its

spread are numerous, starting from net, insect repellent, prophylaxis, early diagnostics, and combination therapies, the case of malarial infection is still very high. World Health Organization (WHO) estimated 219 million malaria cases with 435 thousand of mortality cases in 2017 [2]. Drug resistance poses as one of the most urgent issues in malaria eradication. Artemisinin combined therapy (ACT), the recommended first line of treatment for malaria, has hit a roadblock of partial resistance in Western Cambodia region [3]. The partial resistance itself is marked by the delayed blood-stage parasite [4]. This event causes delayed parasite clearance, allowing a small amount of *Plasmodium* parasite to survive over the course of treatment. This little amount of survived parasite would trigger a recrudescence, interpreted as the condition in which artemisinin-based therapy fails to cure the patient with resistant parasite phenotype.

Nowadays, WHO recommends treatment for uncomplicated malaria with the following ACTs: *artemether-lumefantrine*, *artesunate-amodiaquine*, *artesunate-mefloquine*, *artesunate-sulfadoxine-pyrimethamine*, and *dihydroartemisinin-piperaquine* [5]. Firstly, one ACT will be used at a time in a country. When a high failure rate (>10%) is recorded, then another ACT will be deployed in place of the failing ACT. Despite the utilization of such ACT system deployment, malaria is still highly prevalent in South East Asia region. One of the reasons being is all ACT used artemisinin or its derivatives, despite the rise of partial artemisinin resistance in Greater Mekong Subregion: Cambodia, Laos, Myanmar, Thailand, and Vietnam [4]. The resistance is known to have spread from Cambodia, as the first country to report ACT treatment failure, to surrounding countries [3], [4].

These findings indicate that the artemisinin resistance is persistent and does not develop at random readily. The rise on resistance against ACT might eventually lead to the development of complete artemisinin resistance parasite and persistent infection from insufficient treatment. For this reason, there is a need to further study another drug candidate. Evolutionary relationship of the *plasmodium* genome may shed a new perspective in looking for new target candidate.

Interestingly, several proteins were found to be shared among *plasmodium* species after data mining in PlasmoDB database (<https://plasmodb.org/>), one of them is apical membrane antigen 1 protein (AMA-1). The mature form of this protein is found in the merozoite surface and it is well-established that AMA-1 is one of the essential proteins for the malarial parasite to infect the red blood cells (RBC) [6], [7]. Several studies had developed substantial research regarding the potency of AMA-1 to be a vaccine candidate. Drew et al (2012) reported the antigenic diversity of *P. falciparum* AMA-1 which could give some challenges in designing the vaccine [8]. The structural approach had been established to identify the binding site of AMA-1 and vaccine design [9],

[10]. The polymorphic feature of AMA-1 leads to a challenge in the process of vaccine design [8], [11]. The evolutionary relationship of the *plasmodium* species has been reported using several molecular markers [12]–[14], but the AMA-1 evolutionary relationship among the *plasmodium* species is not yet elucidated.

The objective of this study is to provide valuable information regarding the evolutionary relationship of AMA-1 protein by implementing the phylogenetic analysis from various species of *Plasmodium*. Furthermore, the characteristic differences of these proteins in each *plasmodium* were observed in 2D and 3D protein structure. The results obtained provided valuable information that can support the development of a malaria vaccine using AMA-1 protein.

## 2. Methods

### 2.1. Sequence retrieval and Domain analysis

PlasmoDB database (<https://plasmodb.org/>) was mined for the data in AMA-1 protein sequences for 8 species of *plasmodium*. Five of those could infect humans (*P. falciparum*, *vivax*, *knowlesi*, *ovale*, and *malariae*), while the rest, which could not infect human but could only infect other species (*P. berghei*, *coatneyi*, and *cynomolgi*), served as the comparison for the human infecting ones. A total of 24 protein sequences were retrieved from the database (Table 1). The retrieved sequences were analyzed for its domain and structure using the Interpro server (<https://www.ebi.ac.uk/interpro/beta/search/sequence/>).

### 2.2. Phylogenetic reconstruction

All of the phylogenetic reconstruction was based on Hall's protocols and performed using MEGA X program [15], [16]. Multiple sequence alignment was performed using the MUSCLE algorithm built in the MEGA X [17]. After that, the best maximum likelihood model was estimated and then used to create the ML tree. Jones, Taylor, and Thornton with gamma distribution (JTT+G) model was used to reconstruct the phylogenetic tree. Tree robustness test was performed using 1000 replication bootstraps. Validation test was performed by comparing the ML tree with other trees with different algorithms: neighbour-joining and minimum evolution; which also reconstructed using MEGA X.

TABLE 1: Retrieved AMA-1 protein sequences from PlasmoDB.

Sequence code	Accession Number	Sequence code	Accession Number
<i>P. berghei</i> ANKA	PBANKA_0915000	<i>P.falciparum</i> _IT	PfIT_110038000
<i>P.knowlesi</i> _strain_H	PKNH_0931500	<i>P.falciparum</i> _KE01	PfKE01_110038000
<i>P.knowlesi</i> _strain_Malayan _Strain_Pk1_A	PKNOH_S120150200	<i>P.falciparum</i> _KH01	PfKH01_110037800
<i>P._vivax</i> _P01	PVP01_0934200	<i>P.falciparum</i> _KH02	PfKH02_110038700
<i>P.vivax</i> _Sal-1	PVX_092275	<i>P.falciparum</i> _ML01	PfML01_110038300
<i>P.falciparum</i> _7G8	Pf7G8_110037300	<i>P.falciparum</i> _SD01	PfSD01_110036100
<i>P.falciparum</i> _CD01	PfCD01_110038900	<i>P.falciparum</i> _SN01	PfSN01_110036600
<i>P.falciparum</i> _Dd2	PfDd2_110036700	<i>P.falciparum</i> _TG01	PfTG01_110037900
<i>P.falciparum</i> _GA01	PfGA01_110037700	<i>P._malariae</i> _UG01	PmUG01_09042600
<i>P.falciparum</i> _GB4	PfGB4_110040000	<i>P.ovale</i> _curtisi_GH01	PocGH01_09039800
<i>P.falciparum</i> _GN01	PfGN01_110038000	<i>P.coatneyi</i> _Hackeri	PCOAH_00026700
<i>P.falciparum</i> _HB3	PfHB3_110036900	<i>P.cynomolgi</i> _strain_M	PcyM_0938200

### 2.3. Timetree reconstruction

Timetree was reconstructed based on Mello's protocol with the reconstructed ML tree as the base [18]. The default parameter from time tree tools of MEGA X was used. The time tree calibration for several *Plasmodium* species was retrieved from <http://timetree.org/> [19].

## 3. Results and Discussion

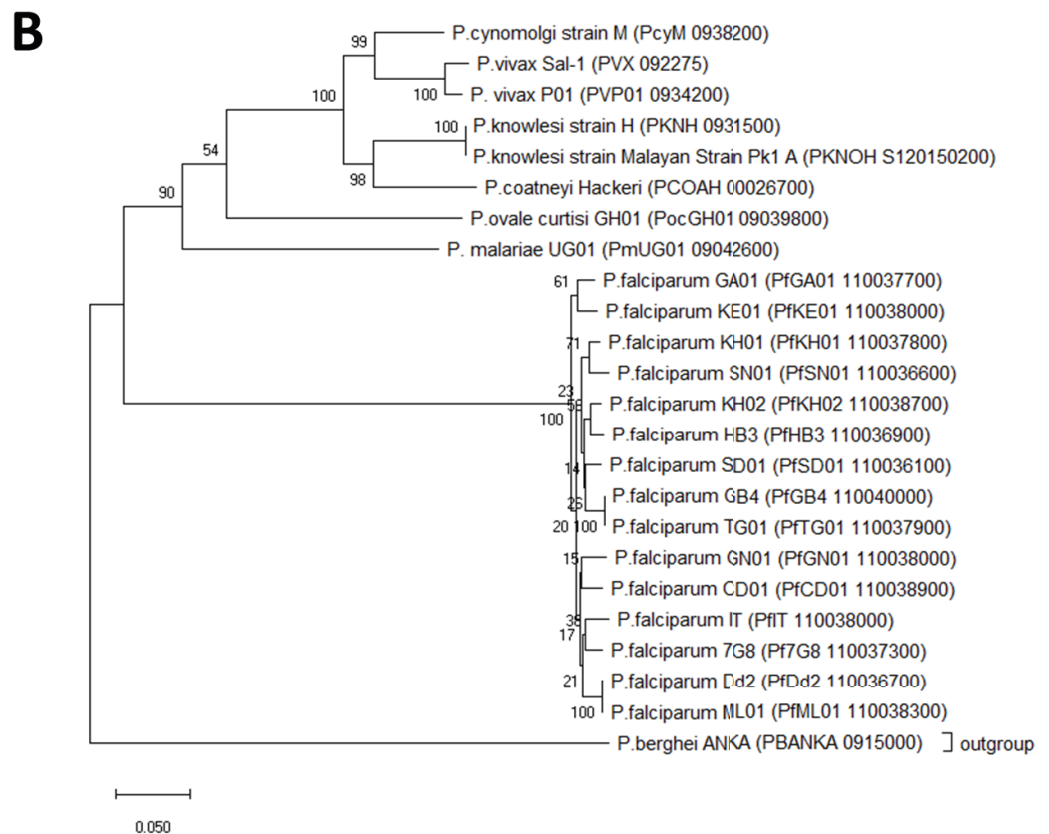
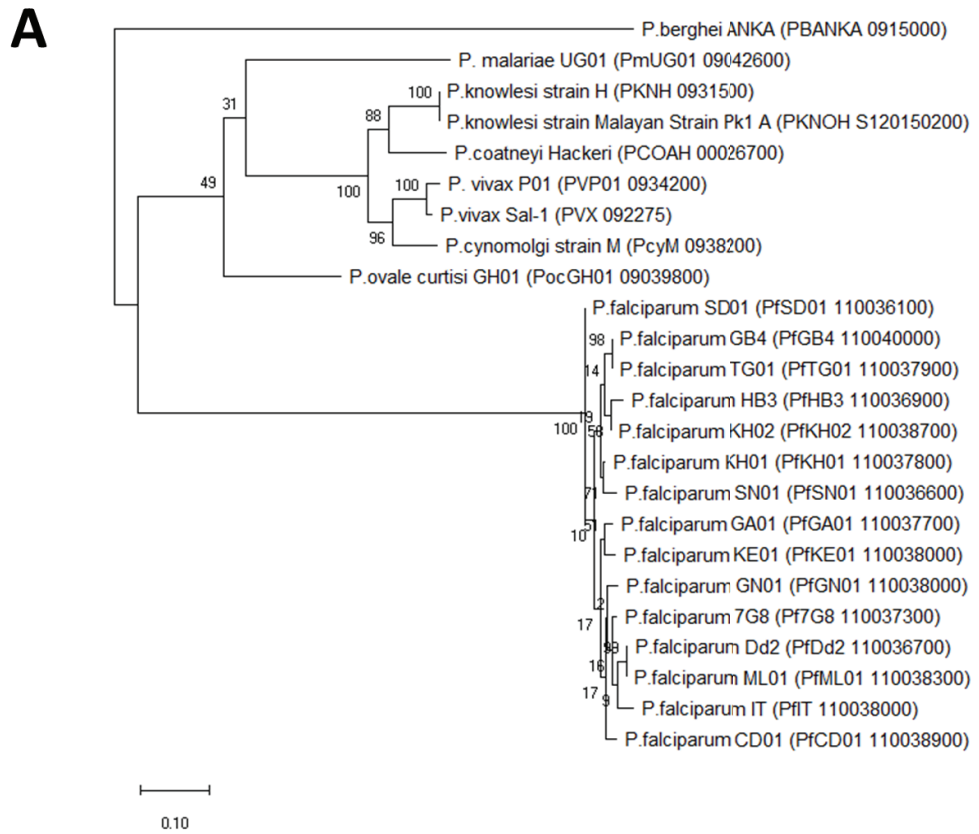
### 3.1. Phylogenetic tree reconstruction

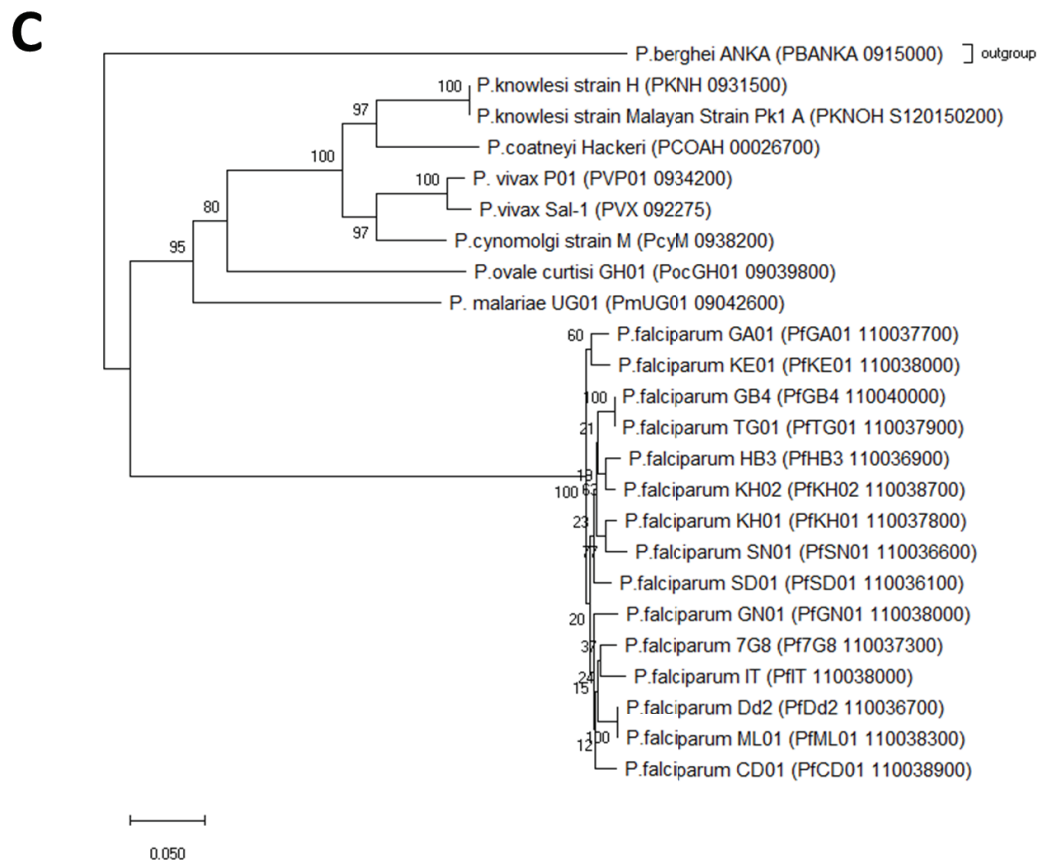
The phylogenetic tree was reconstructed from 24 AMA-1 sequences, which came from various *plasmodium* species (Fig. 1). *P. berghei* was considered as the outgroup in the tree due to its closeness to the root judging from the tree topology. Surprisingly, the tree produced a similar topology using other algorithms, (Fig. 1b, 1c). This indicates the evolutionary hypothesis is similar within those algorithms. Several studies also reported the same topology as our tree although the molecular marker is different [12], [13]. The tight grouping, in terms of branch length, within the same species suggested that AMA-1 is conserved to a certain degree intraspecies. But an extensive study is needed to clarify the degree of AMA-1 protein sequence conservation.

The *P. falciparum* AMA-1 protein was clustered into one clade in all of the reconstructed trees, indicating the highly conserved sequence in *P. falciparum* AMA-1.

Although some reports stated the polymorphism of AMA-1 in this species is due to some evolutionary causes, the AMA-1 protein is still relatively conserved intraspecies [8], [11], [20]. Interestingly, the *P. falciparum* clade had a closer evolutionary relationship with *P. berghei*, which is not infectious to human (Fig. 1). *P. berghei* has been widely known to infect rodents and usually used as a proxy to study the malarial infection in rodents animal model [21], [22]. Several studies reported the positive results of the *P. berghei* ANKA expressed the gene from *P. falciparum*, like the p48/45 and PF83/AMA-1, indicating the similar expression system in both species [23], [24].

Another interesting result was observed in the clade of the *P. knowlesi* with *P. coatneyi* and *P. vivax* with *P. cynomolgi*. Both *P. coatneyi* and *P. cynomolgi* are infecting monkeys but the tree showed the close evolutionary relationship with human infecting *plasmodium*. Moreover, both clades shared the same ancestor with *P. malariae* and *P. ovale* (Fig. 1). These results suggest that the AMA-1 protein may not exclusively responsible for host species infection properties.





**Figure 1:** Reconstructed phylogenetic tree of AMA-1 protein from various *plasmodium* species. A. Maximum Likelihood tree with JTT + G model. B. Minimum evolution tree. C. Neighbor-joining tree. Every tree was reconstructed using 1000 bootstraps.

Both *P. coatneyi* and *P. cynomolgi* infect simians and show similar symptoms to the malarial infection to human. In details, *P. coatneyi* infection could induce severe anemia, coagulopathy, renal impairment, and metabolic dysfunction, similar to human cases of malaria [25]. An interesting study revealed that the genomes of *P. knowlesi*, *P. vivax*, *P. coatneyi* and *P. cynomolgi* were hypothesized coming from the similar ancestor and create the monkey clade in *plasmodium* phylogenetic tree [12], in accordance to our reported result in AMA-1 phylogenetic tree. The elucidation of the *P. cynomolgi* and *P. coatneyi* genomic sequences could serve a critical step in creating a model system to treat *P. vivax*, one of the major malaria agent outside Africa [12], [14]. It could also be true for AMA-1 protein vaccine design.



### 3.2. Time tree reconstruction

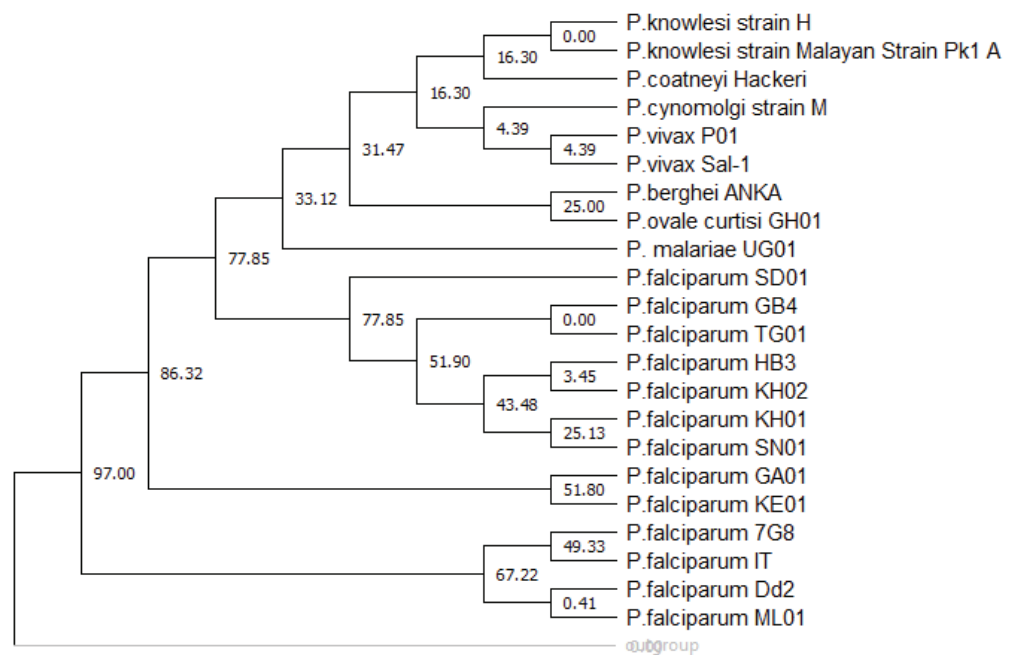
The time tree was reconstructed from the ML tree from the previous analysis. Based on the time tree, it was shown that some AMA-1 relative time divergence somehow supported the conserved hypothesis in the ML tree. Interspecies, the divergence is relatively narrow in the relative time divergence. The monkey clade of the *P. knowlesi* with *P. coatneyi* and *P. vivax* with *P. cynomolgi* was hypothesized to have the earliest divergence in 16.30 MYA. Our result is following the relative divergence of the genomics sequences [12]. Interestingly, the relative divergence time from *P. falciparum* with the monkey clades was shown to be a divergence in 77.85 MYA, indicating the AMA-1 protein sequence of *P. falciparum* is relatively different with the monkey clades and more closely related to the ancestor of AMA-1. Interestingly, *P. falciparum* and *P. vivax* AMA-1 structure have been reported to have similar structure even though their sequence is substantially different. Interestingly, the sequence could complement each other when combined, in terms of infecting host and avoiding the immune system, [26]. This report indicated the flexibility in retaining conserved structure in charge of infecting the host of AMA-1, which in turn could serve the ideal target for vaccine development.

A surprising result was observed in the placement of *P. berghei* AMA-1 in the time tree. Although previous trees showed that the *P. berghei* was on the outer clades and, hypothetically speaking, closer to the ancient AMA-1, the *P. berghei* was placed in the inner clades and closely related to *P. ovale* and diverged 25 MYA. This result is actually per another report using mitochondrial barcode sequence as the marker [13]. The report stated the *P. ovale* and *P. berghei* shared the same ancestry, while *P. falciparum* is the closest one to the outgroup.

### 3.3. Domain and structure analysis

To support the evolutionary relationship result, domain and structural analysis were done to elucidate the difference between the domain of AMA-1 of those *plasmodium* species. Due to the similarities of protein regions for each *plasmodium* strains within the same species, only the representative of each *Plasmodium* species were reported. Based on the result from InterPro, each of the protein belongs to the AMA-1 superfamily and has merozoitesa receptor proteins. Interesting result was found in the domain prediction of the AMA-1. Every AMA-1 protein had a similar pattern: starting from the signal peptide regions, followed by non-cytoplasmic domain, helix transmembrane region, and then the last part is the cytoplasmic domain of the protein. Surprisingly,



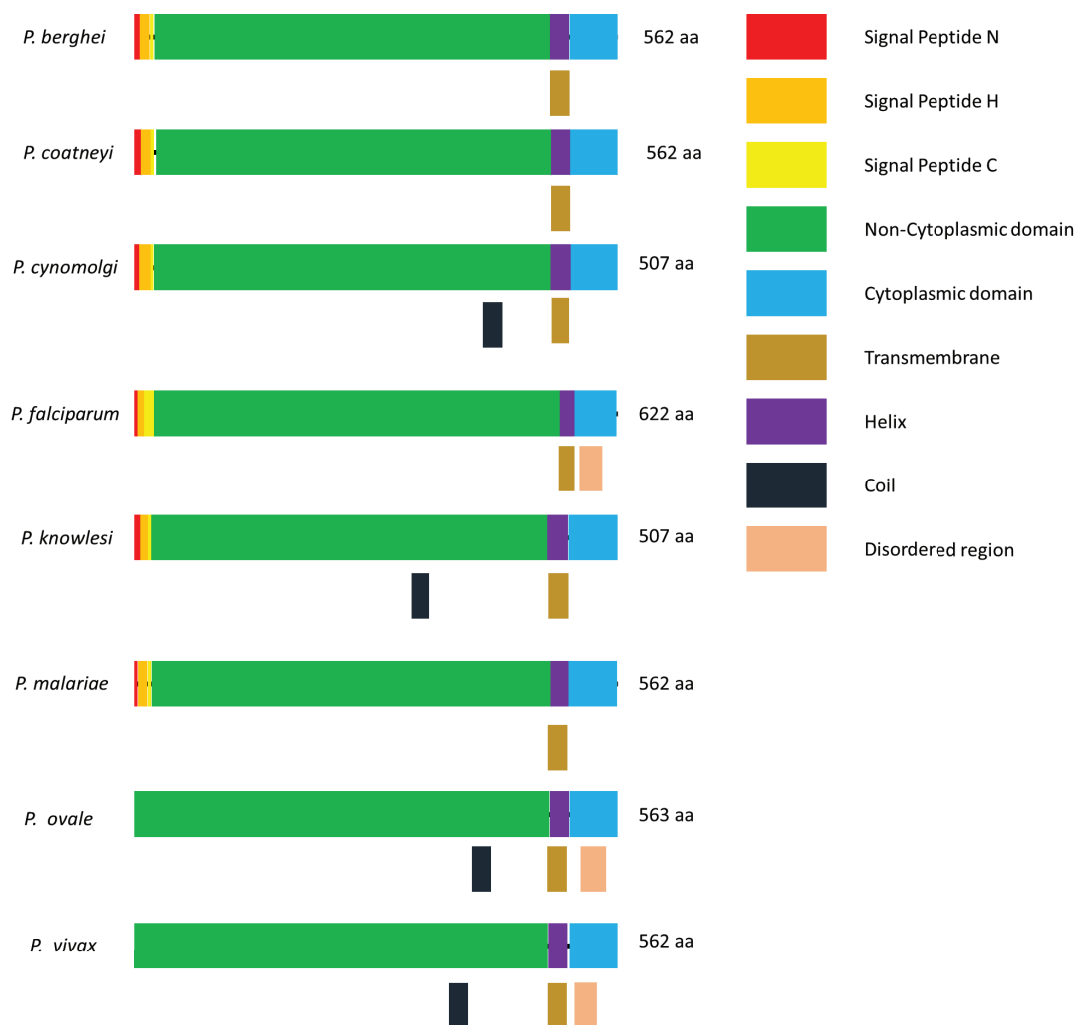


**Figure 2:** Time tree of AMA-1 protein divergence time. Numbers in each intersection indicates estimated divergence time in million years ago (MYA).

*P. ovale* and *P. vivax* were not predicted to have signal peptide regions, but it may be the prediction bias from the InterPro software (Fig. 3).

The previous report showed the flexibility in *P. falciparum* and *P. vivax* AMA-1 [26] yet the similar pattern in the regions of AMA-1 suggest some degree of structural conservensness in AMA-1 protein throughout the *Plasmodium* species. The similar pattern in the AMA-1 organization could serve as the ingredient for vaccine candidates. The signaling peptides have been studied as the candidate for a peptide-based vaccine to induce the immune system in targeting pathogen due to the similarity in structure and motifs [27].

Several unique patterns were observed as well, such as the coil region in the non-cytoplasmic region of *P. cynamolgi*, *P. knowlesi*, *P. ovale*, and *P. vivax*. Disordered regions were found in the cytoplasmic regions of *P. falciparum*, *P. vivax*, and *P. ovale*, which all of them are well-known for its human infecting properties. These results are very interesting when compared to the phylogenetic tree. The coil region was observed in the clade of *P. cynamolgi* and *P. vivax* but not in its sister clade member, *P. coatneyi*. The coil regions are mostly observed in the human-infecting *plasmodium*, except *P. falciparum*. The disordered region was also mostly found in human-infecting *plasmodium* except for *P. malariae* (Fig. 3).



**Figure 3:** Interpro domain prediction analysis results from the representative sequences of each analyzed *Plasmodium* species.

These unique patterns could serve some pointers in the AMA-1 vaccine design. *P. vivax* and *P. cynomolgi* are clustered into one clade and both have the coil region in the non-cytoplasmic domain. The unique coil pattern in the protein organization may serve as the target for the same clade *plasmodium*. Several reports indicated the usage of coil regions in vaccine development in the *P. falciparum* [28], [29]. Surprisingly, the InterPro analysis didn't show any coil region in the *P. falciparum* but it had a disordered region in the cytoplasmic domain. The disordered region is the elusive part of the protein and it is well known for modulating the protein's function and enabling the protein to be involved in many cellular processes [30], [31]. The dynamic structure of this region is also contributing to its complexity [32] and even to the degree of oncogenicity [33]. The significance of the disordered region in protein is well understood which could serve as the target for drugs [30]. In addition to most of the human infecting *plasmodium* had a disordered region in their organization, this part could serve as another target. However,

due to the position of the region is in the cytoplasmic domain, some modification in the vaccine would be necessary to ensure the vaccine delivery.

## 4. Conclusion

This study elucidates some interesting aspects of AMA-1 protein characteristics and evolution in several *Plasmodium* species. The evolutionary relationship of AMA-1 is hypothesized to not following its infectious route to human, even though the protein itself is responsible for its infection to the host cell. The protein domain prediction found the coil region in the non-cytoplasmic region and the signal peptides and disordered region in the cytoplasmic domain could be a beneficial target for the vaccine in human-infecting *plasmodium*. However, substantial continuation studies are needed to elucidate the vaccine candidate potential for AMA-1. Nevertheless, this study could serve as the initial step for the fine-grained AMA-1 vaccine design for *plasmodium*.

## Acknowledgments

The authors send the sincerest thanks to I3L research and community service department (LPPM) for their full support to this research and Giovanni Wijaya from Global Sevilla School for his contribution for the study during his summer internship in i3L.

## Conflict of Interest

The authors declare no conflict of interest in this research.

## Supporting Grants

The research is funded by DRPM DIKTI funding with the scheme "Penelitian Dosen Pemula" in 2019 funding year (Contract No: 48/AKM/MONOPNT/2019).

## References

- [1] A. Y. Vittor *et al.*, "Linking Deforestation to Malaria in the Amazon: Characterization of the Breeding Habitat of the Principal Malaria Vector, *Anopheles darlingi*," *Am J Trop Med Hyg*, vol. 10, no. 1, pp. 54--56, 2013.
- [2] World Health Organization, *World Malaria Report 2018*. 2018.

- [3] H. Noedl, Y. Se, K. Schaecher, B. L. Smith, D. Socheat, and M. M. Fukuda, "Evidence of artemisinin-resistant malaria in Western Cambodia," *N. Engl. J. Med.*, vol. 359, no. 24, pp. 2619--2620, 2008.
- [4] R. Amato *et al.*, "Origins of the current outbreak of multidrug-resistant malaria in southeast Asia: a retrospective genetic study," *Lancet Infect. Dis.*, vol. 18, no. 3, pp. 337--345, 2018.
- [5] World Health Organization, "Artemisinin resistance and artemisinin-based combination therapy efficacy," 2018.
- [6] G. H. Mitchell, A. W. Thomas, G. Margos, A. R. Dluzewski, and L. H. Bannister, "Apical Membrane Antigen 1, a Major Malaria Vaccine Candidate, Mediates the Close Attachment of Invasive Merozoites to Host Red Blood Cells," *Infect. Immun.*, vol. 72, no. 1, pp. 154--158, 2004.
- [7] T. Triglia *et al.*, "Apical membrane antigen 1 plays a central role in erythrocyte invasion by Plasmodium species," *Mol. Microbiol.*, vol. 38, no. 4, pp. 706--718, 2000.
- [8] D. R. Drew *et al.*, "Defining the Antigenic Diversity of Plasmodium falciparum Apical Membrane Antigen 1 and the Requirements for a Multi-Allele Vaccine against Malaria," *PLoS One*, vol. 7, no. 12, 2012.
- [9] F. Jahangiri, N. Jalallou, and M. Ebrahimi, "Analysis of Apical Membrane Antigen (AMA)-1 characteristics using bioinformatics tools in order to vaccine design against Plasmodium vivax," *Infect. Genet. Evol.*, vol. 71, no. March, pp. 224--231, 2019.
- [10] M. Akter *et al.*, "Identification of the Binding Site of Apical Membrane Antigen 1 (AMA1) Inhibitors Using a Paramagnetic Probe," *ChemMedChem*, vol. 1, 2019.
- [11] A. Ebrahimzadeh, A. Gharaei, and K. Saryazdi, "Allelic Diversity of Polymorphic AMA-1 (Apical Membrane Antigen 1) Vaccine Candidate Antigen of Plasmodium falciparum in Two Population of Imported and Indigenous Cases in South-East of Iran using Nested-PCR and RFLP," *J. Trop. Dis.*, vol. 02, no. 05, pp. 5--8, 2014.
- [12] A. Gilabert *et al.*, "Plasmodium vivax-like genome sequences shed new insights into Plasmodium vivax biology and evolution," *PLoS Biol.*, vol. 16, no. 8, pp. 1--25, 2018.
- [13] G. G. Rutledge *et al.*, "Plasmodium malariae and P. ovale genomes provide insights into malaria parasite evolution," *Nature*, vol. 542, no. 7639, pp. 101--104, 2017.
- [14] S. Tachibana *et al.*, "Plasmodium cynomolgi genome sequences provide insight into Plasmodium vivax and the monkey malaria clade," vol. 44, no. 9, pp. 1051--1055, 2013.
- [15] B. G. Hall, "Building phylogenetic trees from molecular data with MEGA," *Mol. Biol. Evol.*, vol. 30, no. 5, pp. 1229--1235, 2013.

- [16] S. Kumar, G. Stecher, M. Li, C. Knyaz, and K. Tamura, "MEGA X: Molecular evolutionary genetics analysis across computing platforms," *Mol. Biol. Evol.*, vol. 35, no. 6, pp. 1547–1549, 2018.
- [17] R. C. Edgar, "MUSCLE: Multiple sequence alignment with high accuracy and high throughput," *Nucleic Acids Res.*, vol. 32, no. 5, pp. 1792–1797, 2004.
- [18] B. Mello, "Estimating timetrees with MEGA and the timetree resource," *Mol. Biol. Evol.*, vol. 35, no. 9, pp. 2334–2342, 2018.
- [19] S. B. Hedges, J. Marin, M. Suleski, M. Paymer, and S. Kumar, "Tree of life reveals clock-like speciation and diversification," *Mol. Biol. Evol.*, vol. 32, no. 4, pp. 835–845, 2015.
- [20] A. G. Craig *et al.*, "The role of animal models for research on severe malaria," *PLoS Pathog.*, vol. 8, no. 2, 2012.
- [21] R. Basir *et al.*, "Plasmodium berghei ANKA infection in ICR mice as a model of cerebral malaria," *Iran. J. Parasitol.*, vol. 7, no. 4, pp. 62–74, 2012.
- [22] A. L. Goodman *et al.*, "The utility of Plasmodium berghei as a rodent model for anti-merozoite malaria vaccine assessment," *Sci. Rep.*, vol. 3, 2013.
- [23] C. H. M. Kocken *et al.*, "Precise timing of expression of a Plasmodium falciparum-derived transgene in Plasmodium berghei is a critical determinant of subsequent subcellular localization," *J. Biol. Chem.*, vol. 273, no. 24, pp. 15119–15124, 1998.
- [24] A. S. Othman *et al.*, "Expression of full-length Plasmodium falciparum P48/45 in P. berghei blood stages: A method to express and evaluate vaccine antigens," *Mol. Biochem. Parasitol.*, vol. 224, no. July, pp. 44–49, 2018.
- [25] A. Moreno *et al.*, "Plasmodium coatneyi in rhesus macaques replicates the multisystemic dysfunction of severe malaria in humans," *Infect. Immun.*, vol. 81, no. 6, pp. 1889–1904, 2013.
- [26] D. R. Drew, P. R. Sanders, G. Weiss, P. R. Gilson, B. S. Crabb, and J. G. Beeson, "Functional Conservation of the AMA1 Host-Cell Invasion Ligand between P. falciparum and P. vivax: A Novel Platform to Accelerate Vaccine and Drug Development," *J. Infect. Dis.*, vol. 217, no. 3, pp. 498–503, 2018.
- [27] R. Kovjazin and L. Carmon, "The use of signal peptide domains as vaccine candidates," *Hum. Vaccines Immunother.*, vol. 10, no. 9, pp. 2733–2740, 2014.
- [28] V. Villard *et al.*, "Rapid identification of malaria vaccine candidates based on  $\alpha$ -helical coiled coil protein motif," *PLoS One*, vol. 2, no. 7, 2007.
- [29] C. P. Karch *et al.*, "The use of a P. falciparum specific coiled-coil domain to construct a self-assembling protein nanoparticle vaccine to prevent malaria," *J. Nanobiotechnology*, vol. 15, no. 1, pp. 1–10, 2017.

- [30] M. M. Babu, "The contribution of intrinsically disordered regions to protein function, cellular complexity, and human disease," *Biochem. Soc. Trans.*, vol. 44, no. 5, pp. 1185–1200, 2016.
- [31] M. Madan Babu, R. Van Der Lee, N. Sanchez De Groot, J. Rg Gsponer, J. Gough, and K. Dunker, "Intrinsically disordered proteins: regulation and disease This review comes from a themed issue on Sequences and topology Edited," *Curr. Opin. Struct. Biol.*, vol. 21, pp. 1–9, 2011.
- [32] J. H. Na, W. K. Lee, and Y. G. Yu, "How do we study the dynamic structure of unstructured proteins: A case study on nopp140 as an example of a large, intrinsically disordered protein," *Int. J. Mol. Sci.*, vol. 19, no. 2, 2018.
- [33] E. R. Tamarozzi and S. Giuliatti, "Understanding the role of intrinsic disorder of viral proteins in the oncogenicity of different types of HPV," *Int. J. Mol. Sci.*, vol. 19, no. 1, 2018.